



Beaufort County Public Works
Stormwater Infrastructure
Project Summary

Project Summary: Clydesdale Circle

Activity: Routine/Preventive Maintenance

Duration: 10/22/19-10/29/19

Narrative Description of Project:

Replaced (1) driveway pipe.

2020-021 / Clydesdale Circle

	Labor Hours	Labor Cost	Equipment Cost	Material Cost	Contractor Cost	Indirect Labor	Total Cost
ASI / Asphalt Installation	80.0	\$1,685.20	\$217.76	\$84.76	\$0.00	\$673.50	\$2,661.22
AUDIT / Audit Project	1.0	\$21.79	\$0.00	\$0.00	\$0.00	\$0.00	\$21.79
DPRPL / Driveway Pipe - Replaced	57.0	\$1,212.82	\$287.88	\$354.24	\$0.00	\$647.07	\$2,502.01
HAUL / Hauling	20.0	\$445.40	\$283.20	\$1,230.83	\$0.00	\$288.40	\$2,247.83
UTLOC / Utility locates	0.5	\$10.90	\$0.00	\$0.00	\$0.00	\$0.00	\$10.90
2020-021 / Clydesdale Circle Sub Total	158.5	\$3,376.11	\$788.84	\$1,669.83	\$0.00	\$1,608.97	\$7,443.75
Grand Total	158.5	\$3,376.11	\$788.84	\$1,669.83	\$0.00	\$1,608.97	\$7,443.75

Before

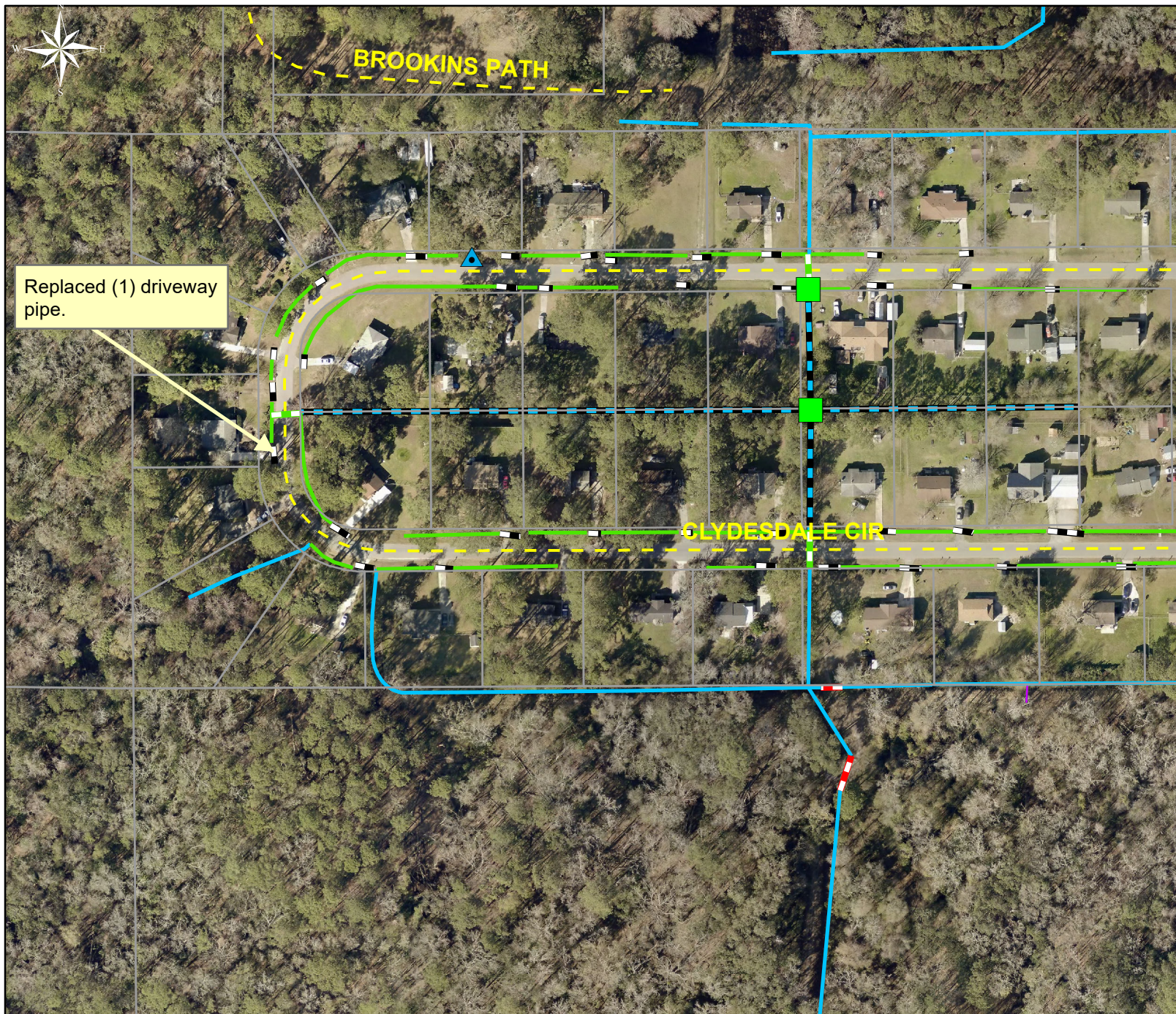


During



After





Project: Clydesdale Circle

Activity: Routine Preventive Maintenance

Project #: 2020-021

Township/SW Dist: Port Royal Island/6

Completed: October 2019

Legend

Drainage Type

- Access Pipe
- Bleeder Pipe
- Channel Pipe
- Channel
- Stream
- Crossline Pipe
- Driveway Pipe
- Lateral
- Lateral Pipe
- River
- Road Pipe
- Roadside
- Roadside Pipe

0 40 80 160 240 320
Feet

1 inch = 170 feet

Prepared By: BC Stormwater Management Utility

Date Print: 011/07/19

File: C:\project summaries map\Clydesdale Circle_2020-021